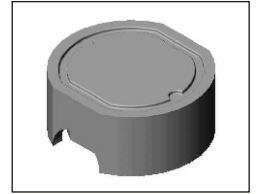


# SMT Power Inductor

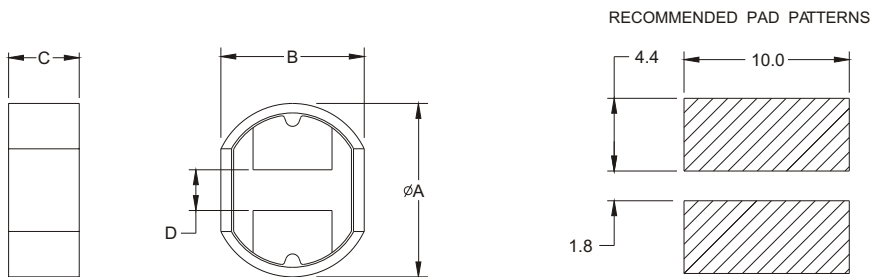
## SIR136 Type

### Features

- RoHS compliant.
- Low profile (5.9mm max. height) SMD type.
- Magnetically shielded.
- Self-leads, suitable for high density mounting.
- High energy storage and low DCR.
- Provided with embossed carrier tape packing.
- Ideal for power source circuits, DC-DC converter, DC-AC inverters inductor applications.
- In addition to the standard versions shown here, customized inductors are available to meet your exact requirements.



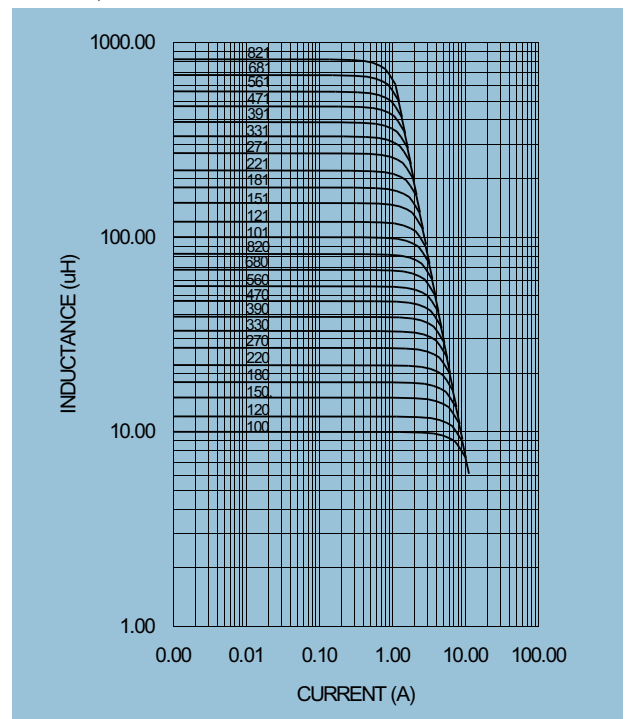
### Mechanical Dimension:



UNIT:mm/inch  
 A = 12.6 ± 0.5 / 0.496 ± 0.020  
 B = 11.6 ± 0.5 / 0.457 ± 0.020  
 C = 5.4 ± 0.5 / 0.213 ± 0.020  
 D = 1.5 ± 0.2 / 0.059 ± 0.008

**Electrical Characteristics:** 25°C, 10~18uH 100KHz, 0.1V. 100~820uH 1KHz, 1V.

PART NO.	L <sup>1</sup> (uH)	DCR (Ω) MAX	I <sub>rated</sub> <sup>2</sup> (Adc)
SIR136 - 100	10	0.05	2.65
SIR136 - 120	12	0.05	2.50
SIR136 - 150	15	0.06	2.45
SIR136 - 180	18	0.06	2.40
SIR136 - 220	22	0.07	2.20
SIR136 - 270	27	0.08	2.00
SIR136 - 330	33	0.10	1.80
SIR136 - 390	39	0.11	1.65
SIR136 - 470	47	0.12	1.50
SIR136 - 560	56	0.15	1.38
SIR136 - 680	68	0.17	1.26
SIR136 - 820	82	0.20	1.14
SIR136 - 101	100	0.25	1.05
SIR136 - 121	120	0.28	0.95
SIR136 - 151	150	0.40	0.85
SIR136 - 181	180	0.48	0.77
SIR136 - 221	220	0.52	0.70
SIR136 - 271	270	0.70	0.63
SIR136 - 331	330	0.80	0.57
SIR136 - 391	390	1.08	0.52
SIR136 - 471	470	1.20	0.48
SIR136 - 561	560	1.34	0.44
SIR136 - 681	680	1.78	0.40
SIR136 - 821	820	2.00	0.36



1. Tolerance of inductance: ±20% for 10~18uH, ±15% for 22~820uH.
2. I<sub>rated</sub> is the DC current which cause the inductance drop less than 25% of its nominal inductance without current for 10~18uH and drop less than 20% of its nominal inductance for 22~820uH and the surface temperature of the part increase less than 45°C.
3. Operating temperature : -20°C to 105°C (including self-temperature rise).



**DELTA ELECTRONICS, INC.**

(TAOYUAN PLANT CPBG) 252, SAN YING ROAD, KUEISAN INDUSTRIAL ZONE, TAOYUAN SHIEN, 333, TAIWAN, R.O.C.

TEL: 886-3-3591968; FAX: 886-3-3591991

<http://www.deltawww.com>